

C - cut length
B - bearing to bearing of Sockets

1 1/2 Galv. Bridge Cable

Black Point Bond - 2" wide

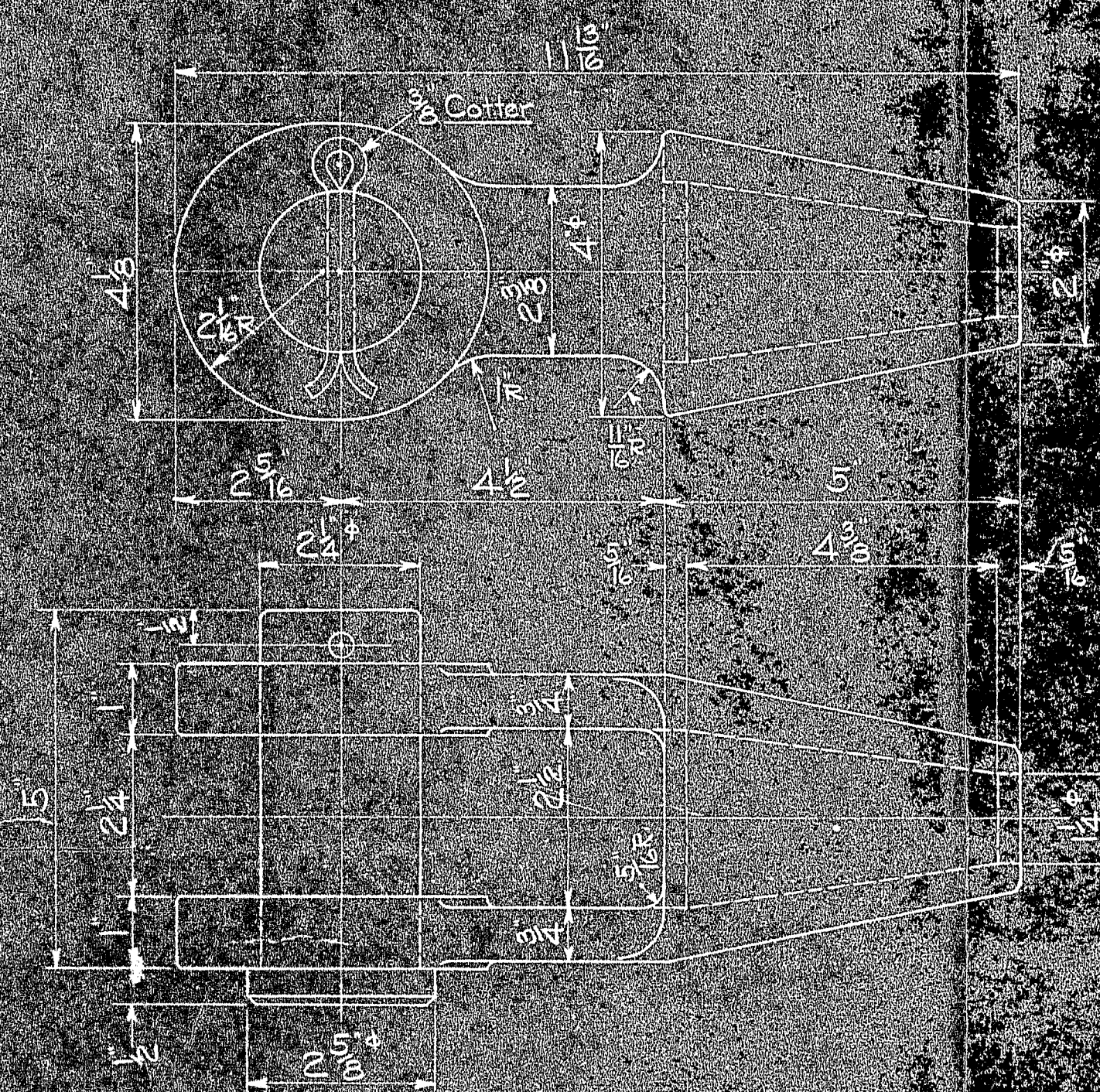
A - center to center of Pins

SUSPENDERS

Measured at 15,450 lbs tension at 68°F

Each suspender shall have a longitudinal stripe painted on full length during time of prestressing

MARK	A	B	C	Location
BR61-2A	12-7 3/4	6-3 1/4	11-0 3/4	Panel Point 1
BR61-2B	20-5	10-2 1/2	18-10	2
BR61-2C	29-3 1/2	14-7 1/2	27-8 1/2	3
BR61-2D	39-3 1/2	19-7 1/2	37-8 1/2	4
BR61-2E	50-5	25-2 1/2	48-10	5
BR61-2F	62-7 1/2	31-3 1/2	61-0 3/4	6
BR61-2G	76-0 1/2	38-0 1/2	74-5 1/2	7
BR61-2H	90-6	45-3	88-11	8
BR61-2J	106-1 1/2	53-0 1/2	104-6 3/4	9
BR61-2K	122-10 1/2	61-5 1/2	121-3 1/2	10
BR61-2L	140-9 1/2	70-4 1/2	139-2 1/2	11
BR61-2M	158-10 1/2	79-11 1/2	158-3 1/2	12
BR61-2N	180-0 1/2	90-0 1/2	178-5 1/2	13
BR61-2P	201-4	100-8	199-9	14
BR61-2R	223-0 1/2	111-10 1/2	222-2 1/2	15
BR61-2S	247-3 1/2	123-7 1/2	245-5 1/2	16
BR61-2T	246-7 1/2	123-3 1/2	245-0 1/2	18
BR61-2U	222-8 1/2	111-4 1/2	221-1 1/2	19
BR61-2V	199-11 1/2	99-11 1/2	198-4 1/2	20
BR61-2W	178-3 1/2	89-1 1/2	176-8 1/2	21
BR61-2Y	157-9 1/2	78-10 1/2	156-2 1/2	22
BR61-2Z	138-5 1/2	69-2 1/2	136-10 1/2	23
BR61-2AA	120-3 1/2	60-1 1/2	118-8 1/2	24
BR61-2AB	103-3	51-7 1/2	101-8	25
BR61-2AG	87-4 1/2	43-8 1/2	85-9 1/2	26
BR61-2AD	72-8 1/2	36-4 1/2	71-1 1/2	27
BR61-2AE	59-1 1/2	29-6 1/2	57-6 1/2	28
BR61-2AF	46-9 1/2	23-4 1/2	45-2 1/2	29
BR61-2AG	35-10 1/2	17-11 1/2	34-3 1/2	30
BR61-2AH	26-8 1/2	13-4 1/2	25-1 1/2	31
BR61-2AJ	19-2 1/2	9-7 1/2	17-7 1/2	32
BR61-2AK	13-4 1/2	6-8 1/2	11-9 1/2	33
BR61-2AL	9-2 1/2	4-7 1/2	7-7 1/2	34
BR61-2AN	6-8 1/2	3-4 1/2	5-1 1/2	35
BR61-2AN	5-10 1/2	2-11 1/2	4-3 1/2	36



BR61-2AP - SOCKET
Drop Forging of Mild Steel

PRELIMINARY PRINT
For approval of Socket BR61-2AP only

Checked by: A.T.E.

APPROVED: _____ DATE: _____

DESIGNED BY: _____

DRAWN BY: _____

BR61-2AP	276	See Note	1779	Socket
BR61-2AN	2		1824	Suspender
BR61-2AM	4			
BR61-2AL	4			
BR61-2AK	4			
BR61-2AJ	4			
BR61-2AH	4			
BR61-2AG	4			
BR61-2AF	4			
BR61-2AE	4			
BR61-2AD	4			
BR61-2AC	4			
BR61-2AB	4			
BR61-2AA	4			
BR61-2Z	4			
BR61-2Y	4			
BR61-2X	4			
BR61-2W	4			
BR61-2V	4			
BR61-2U	4			
BR61-2T	4			
BR61-2S	4			
BR61-2R	4			
BR61-2P	4			
BR61-2N	4			
BR61-2M	4			
BR61-2L	4			
BR61-2K	4			
BR61-2J	4			
BR61-2I	4			
BR61-2H	4			
BR61-2G	4			
BR61-2F	4			
BR61-2E	4			
BR61-2D	4			
BR61-2C	4			
BR61-2B	4			
BR61-2A	4			

APPROVED

DEER ISLE SEDGWICK BRIDGE
HANCOCK COUNTY, MAINE

SUSPENDER DETAILS

DESIGNED BY: _____ DATE: _____

APPROVED: _____

DESIGNED BY: _____

DRAWN BY: _____

SCALE: 3/8" = 1'-0"

SHEET: 2 OF 2

BR61 2

